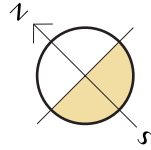


Villas Dinant

Plot Sizes

2126	2117(D+)
420,00	500,00



General surfaces

All measures are expressed in M2.



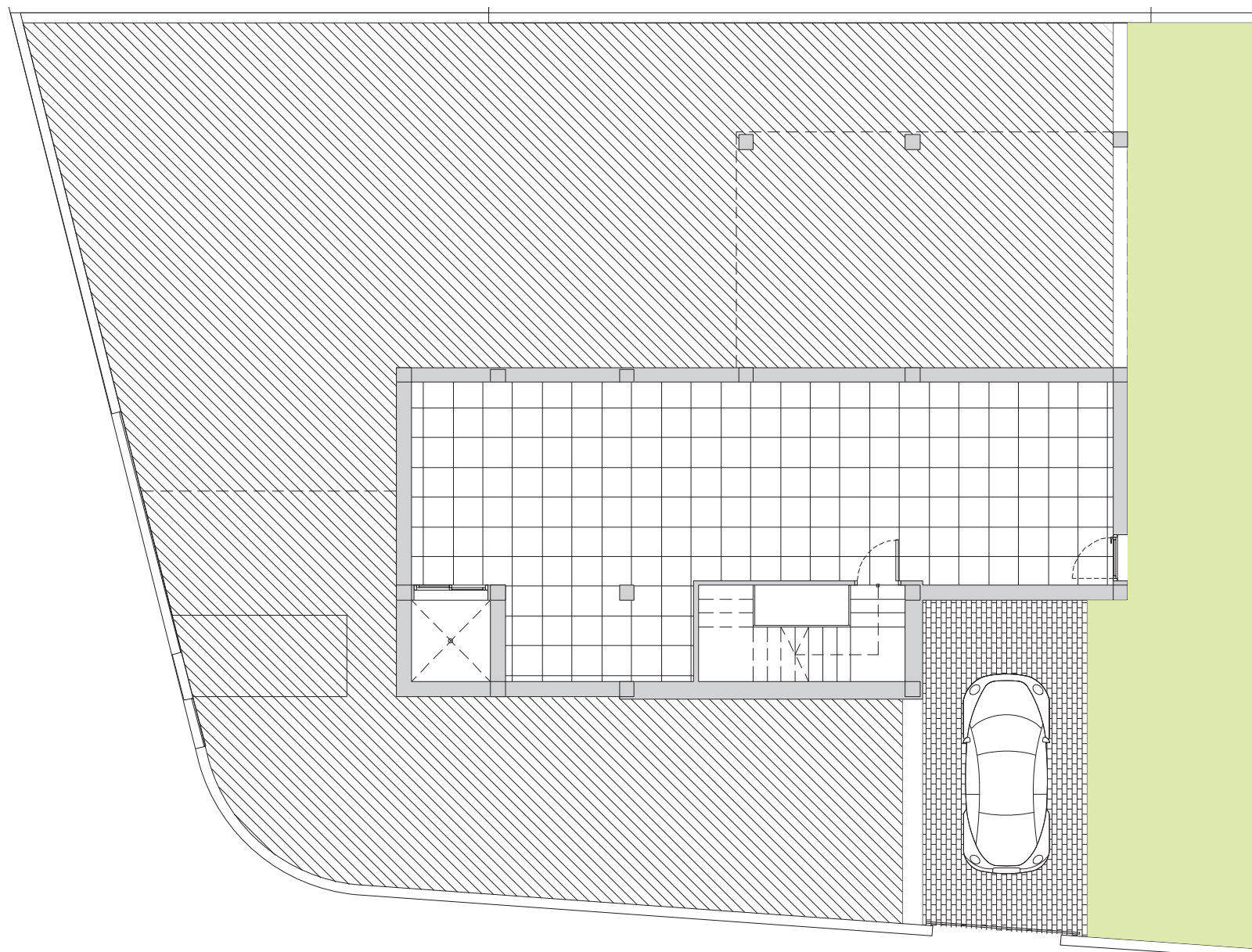
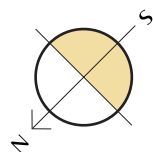
Villa Dinant

Basement Floor



Built surfaces

Built area	155,70
Pool area	8x4
Terraces area	59,00
Basement area	82,90
Parking	28,00



**BUILDING
YOUR TIME**

Legal Notice: Standard floor plan, which does not include the common use areas. Each residence has its own floor plan, which may vary slightly from the standard one. The furniture and household items that appear in the plan are merely for decorative purposes. This is not a contractual document. This plan can be modified by the Project Management Team according to construction or design needs.

All measures are expressed in M2.

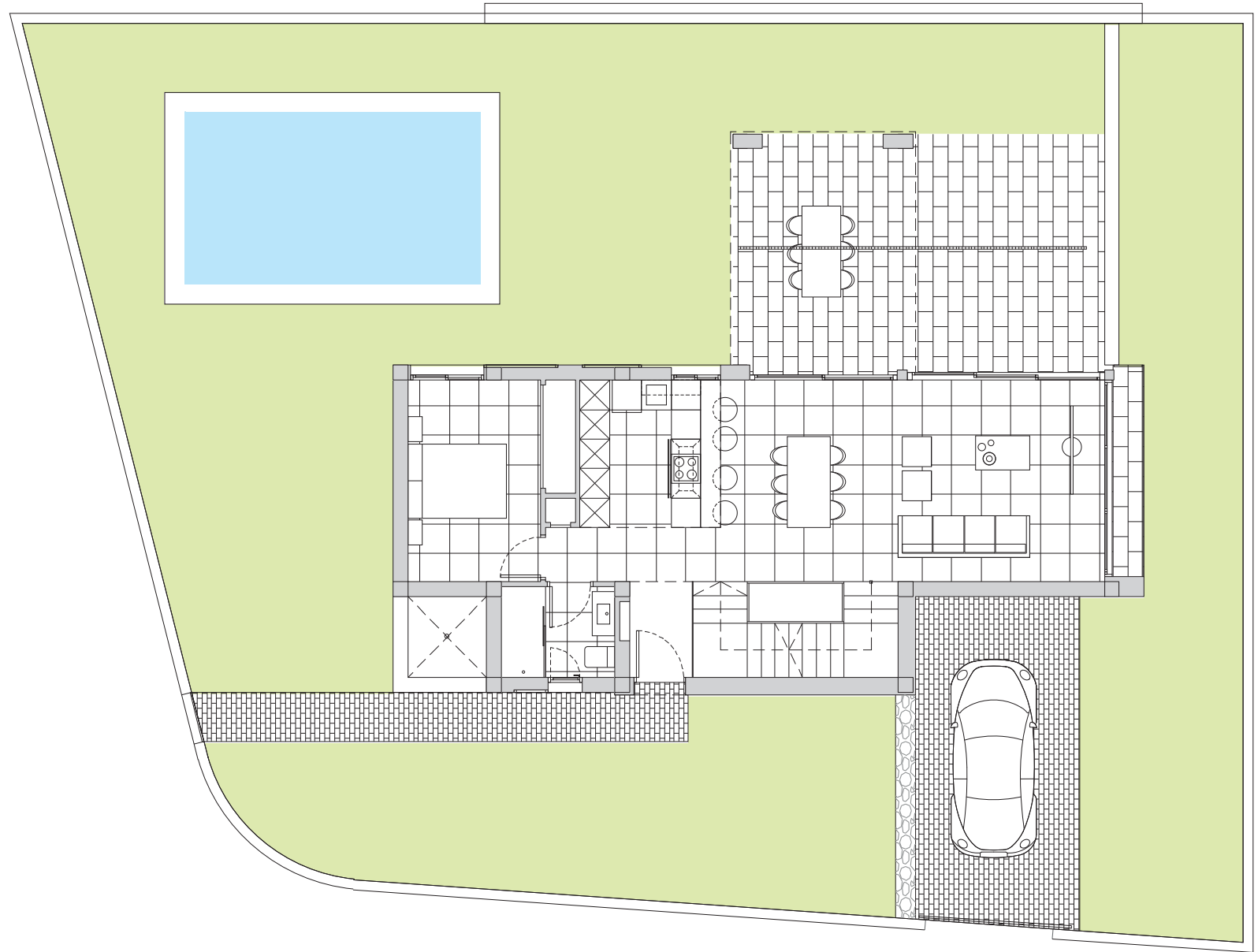
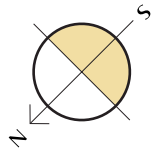
Villas Dinant

Ground floor.



Built surfaces

Built area	155,70
Pool area	8x4
Terraces area	59,00
SKC	43,71
Bedroom 1	12,60
Bathroom 1	4,20
Corridor	0,80
Hall	2,50
Stairs	6,40
Terrace	39,20



Villa Dinant

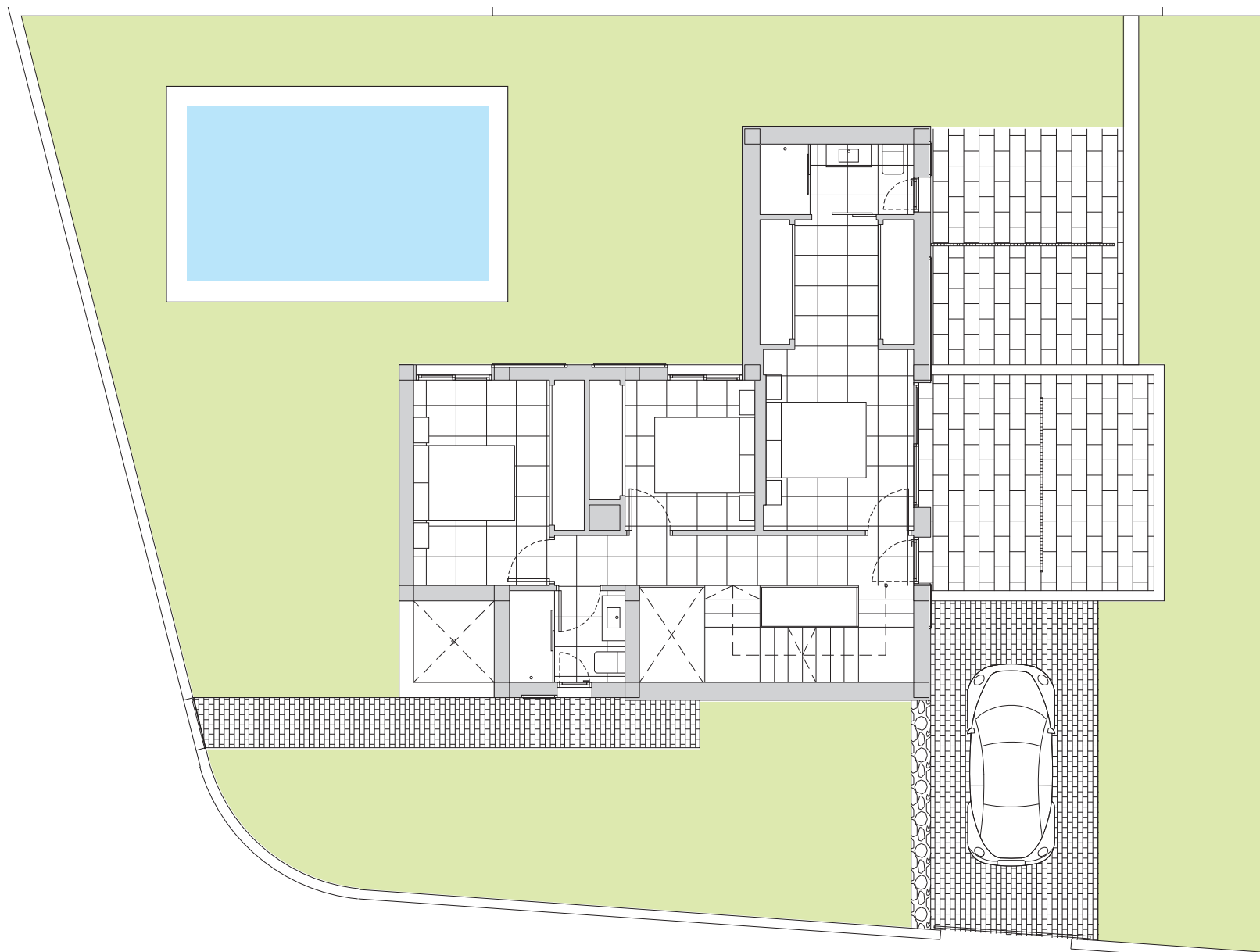
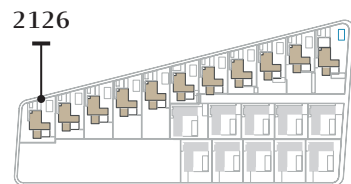
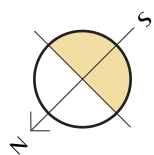
First floor.



Built surfaces

Built area	155,70
Pool area	8x4
Terraces area	59,00

Bedroom 2	19,00
Bedroom 3	9,50
Bedroom 4	13,20
Bathroom 2	4,30
Bathroom 3	4,20
Corridor	7,20
Stairs	6,40



**BUILDING
YOUR TIME**

Legal Notice: Standard floor plan, which does not include the common use areas. Each residence has its own floor plan, which may vary slightly from the standard one. The furniture and household items that appear in the plan are merely for decorative purposes. This is not a contractual document. This plan can be modified by the Project Management Team according to construction or design needs.

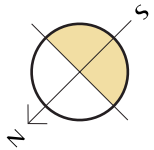
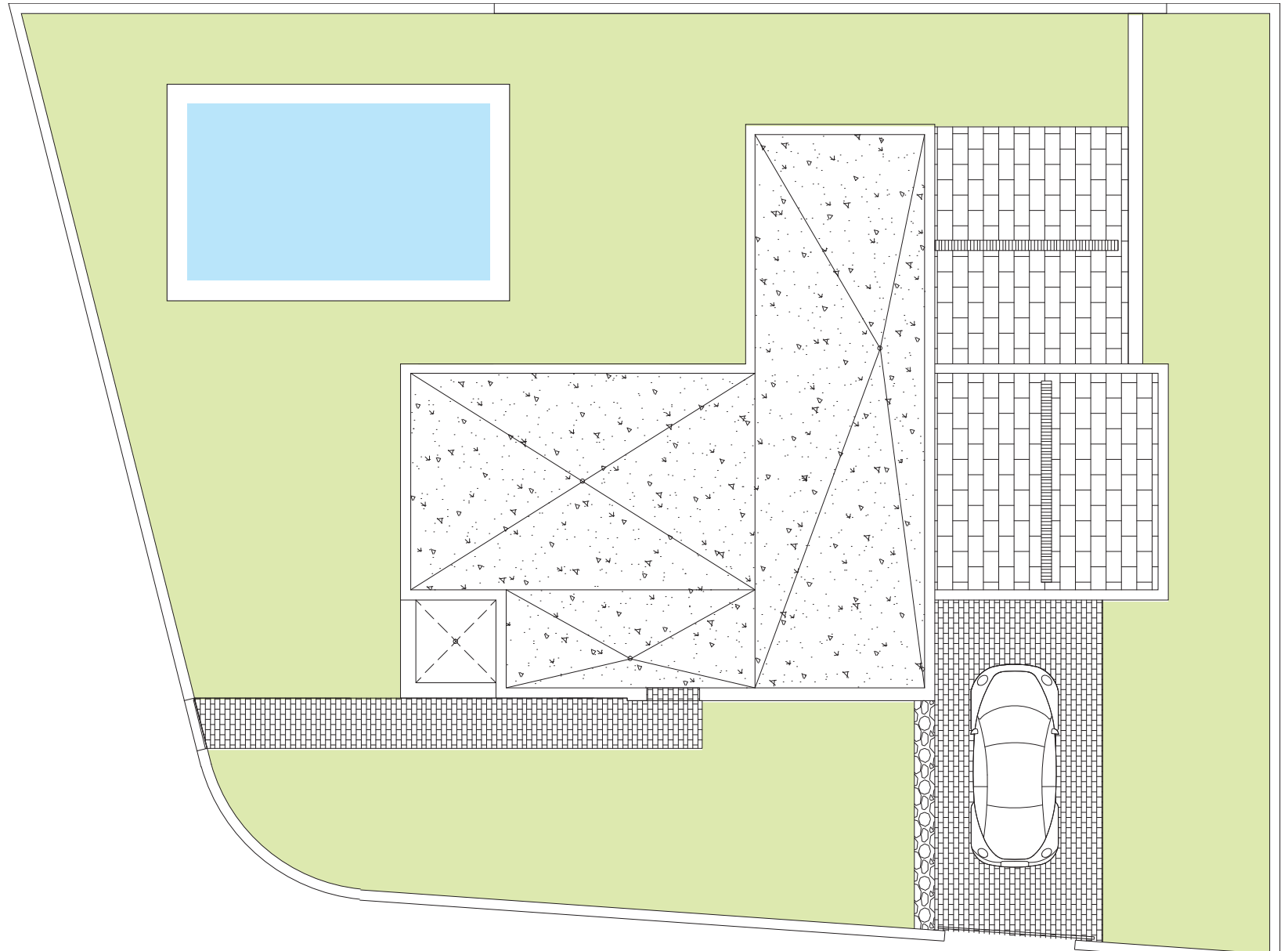
All measures are expressed in M2.

Villa Dinant



Built surfaces

Built area	155,70
Pool area	8x4
Terraces area	59,00



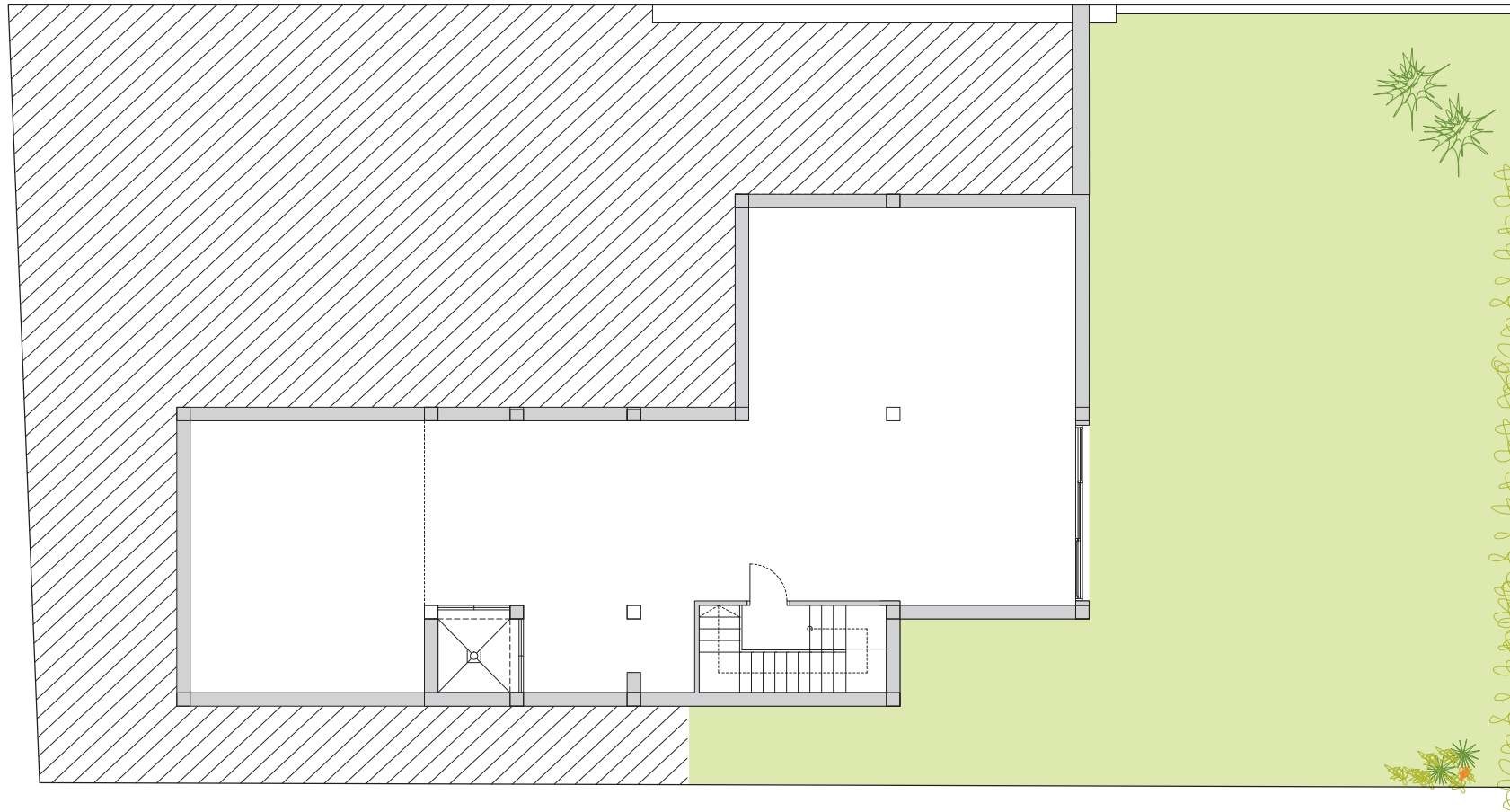
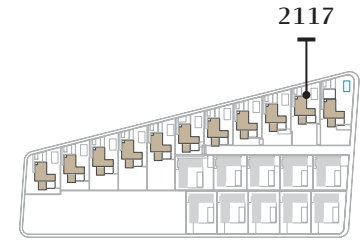
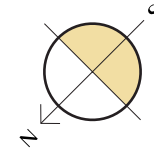
Legal Notice: Standard floor plan, which does not include the common use areas. Each residence has its own floor plan, which may vary slightly from the standard one. The furniture and household items that appear in the plan are merely for decorative purposes. This is not a contractual document. This plan can be modified by the Project Management Team according to construction or design needs.

All measures are expressed in M2.

Villa Dinant Plus, Floor Plans & measures - House 2117

Villa Dinant + Basement Floor

Built surfaces	
Basement area	102,00
Pool area	8x4
Terraces	59,00



Legal Notice: Standard floor plan, which does not include the common use areas. Each residence has its own floor plan, which may vary slightly from the standard one. The furniture and household items that appear in the plan are merely for decorative purposes. This is not a contractual document. This plan can be modified by the Project Management Team according to construction or design needs.

All measures are expressed in M2.

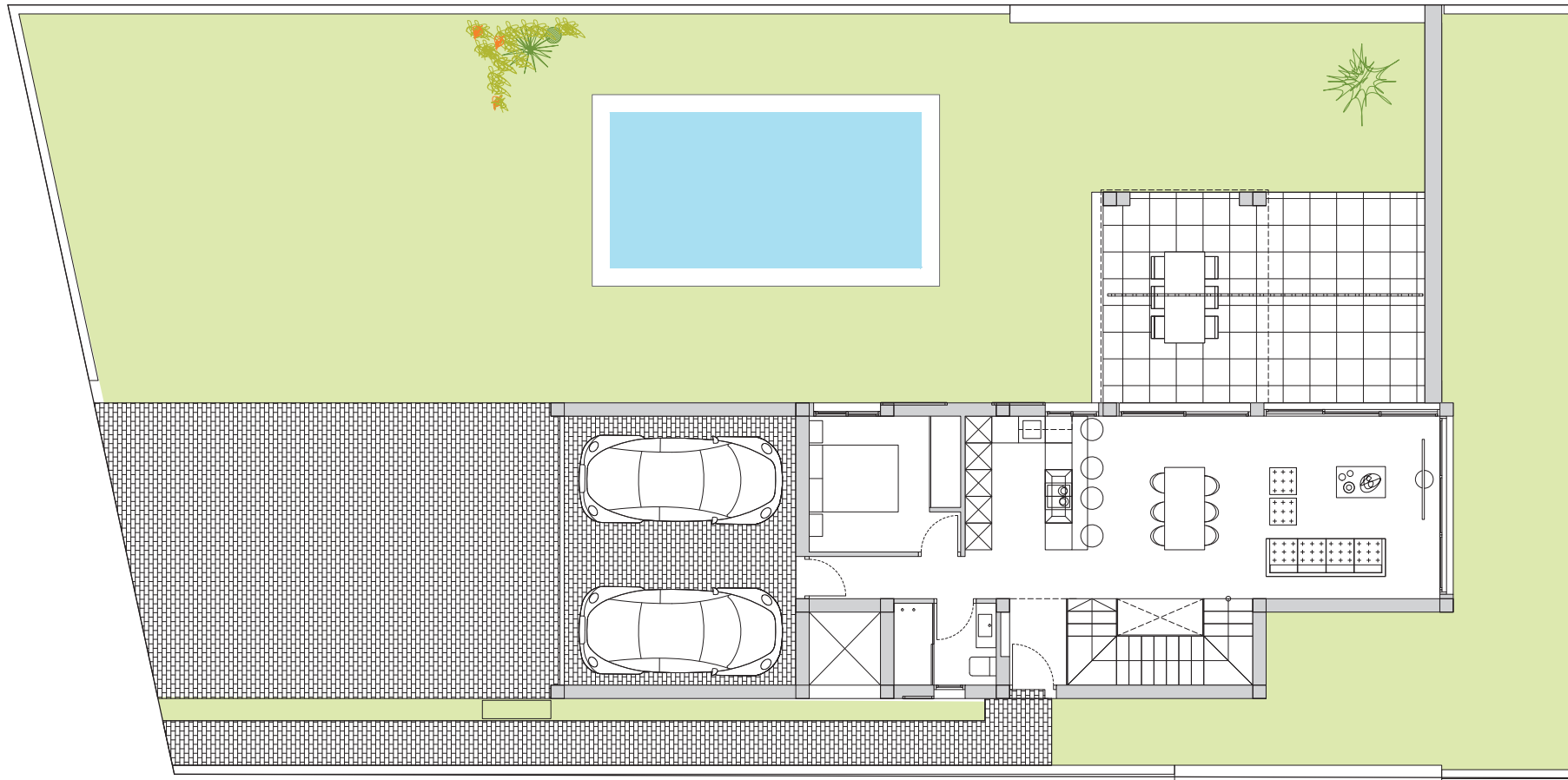
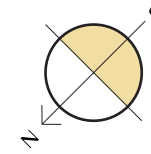
Villa Dinant +

Ground floor.



Built surfaces

Built area	155,70	SKC	43,70	Corridor	0,80
Pool area	8x4	Bedroom 1	12,60	Hall	2,47
Terraces	59,00	Bathroom 1	4,20	Stairs	6,40
				Parking	31,40



**BUILDING
YOUR TIME**

Legal Notice: Standard floor plan, which does not include the common use areas. Each residence has its own floor plan, which may vary slightly from the standard one. The furniture and household items that appear in the plan are merely for decorative purposes. This is not a contractual document. This plan can be modified by the Project Management Team according to construction or design needs.

All measures are expressed in M2.

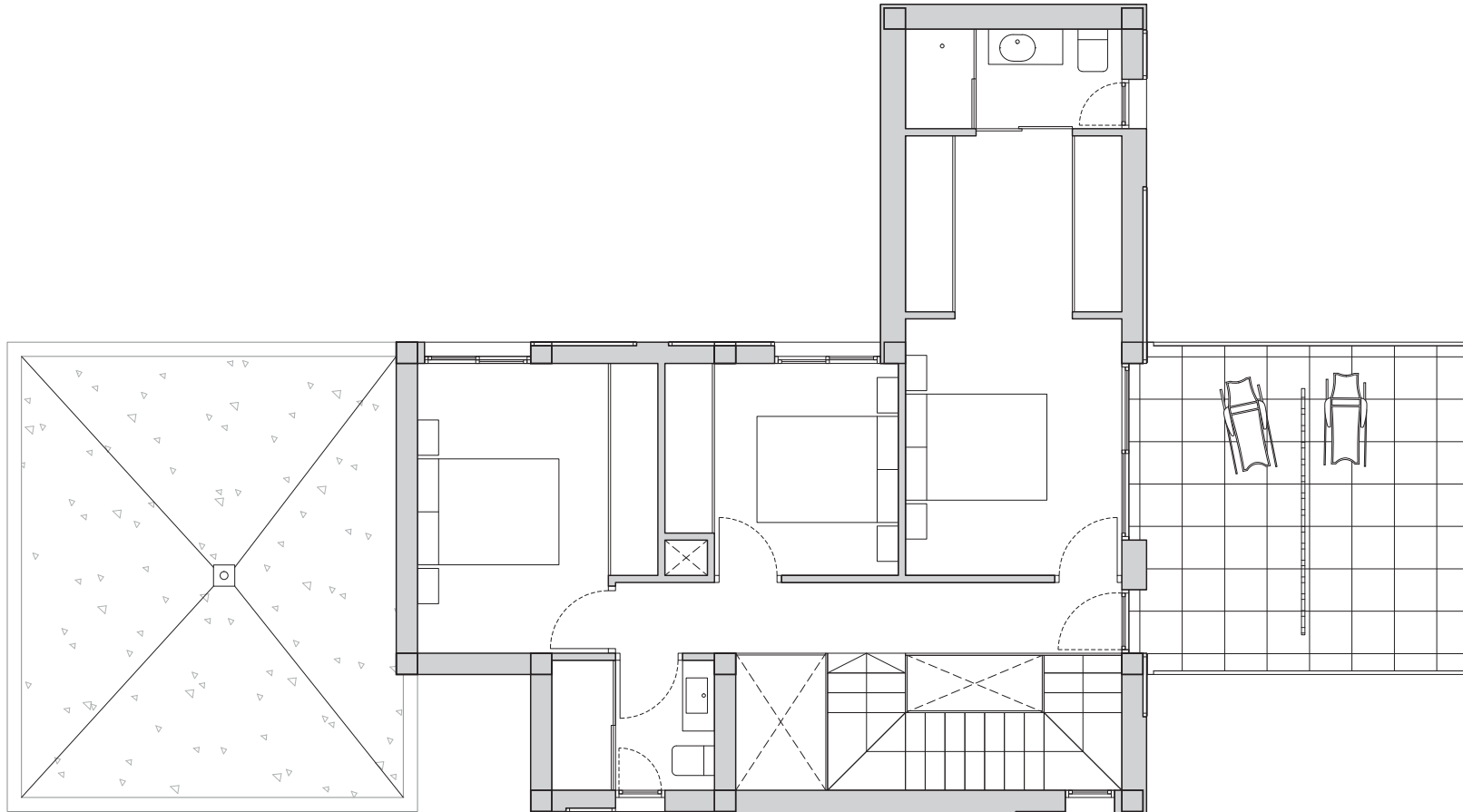
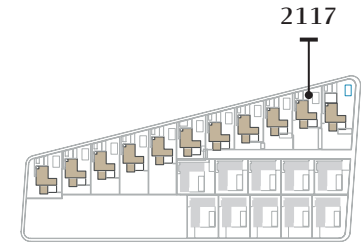
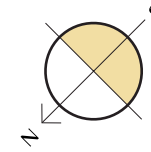
Villa Dinant +

First floor.



Built surfaces

Built area	155,70	Bedroom 2	19,00	Bathroom 3	4,30
Pool area	8x4	Bedroom 3	9,50	Corridor	7,2
Terraces	59,00	Bedroom 4	13,17	Stairs	6,40
		Bathroom 2	4,30		



Legal Notice: Standard floor plan, which does not include the common use areas. Each residence has its own floor plan, which may vary slightly from the standard one. The furniture and household items that appear in the plan are merely for decorative purposes. This is not a contractual document. This plan can be modified by the Project Management Team according to construction or design needs.

All measures are expressed in M2.